

SOUTHEAST
QUADRANT
REDEVELOPMENT

VIP VISITOR

NEW AIRPORT STAFF
MEMBER



MONTHLY REPORT

NOVEMBER 2014



ADDISON BY THE NUMBERS

430,148

REVENUE IN DOLLARS

↓ 3%

FROM LAST MONTH

↑ 11%

FROM LAST YEAR

7,361

TOTAL AIRCRAFT OPERATIONS

↓ 22%

FROM LAST MONTH

↑ 1%

FROM LAST YEAR

596,957

TOTAL FUEL FLOWAGE IN GALLONS

↓ 13%

FROM LAST MONTH

↑ 6%

FROM LAST YEAR

39

INTERNATIONAL FLIGHTS

↑ 11%

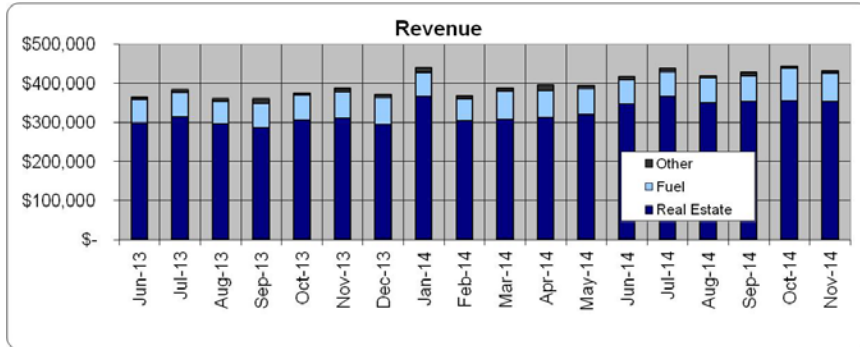
FROM LAST MONTH

↓ 35%

FROM LAST YEAR

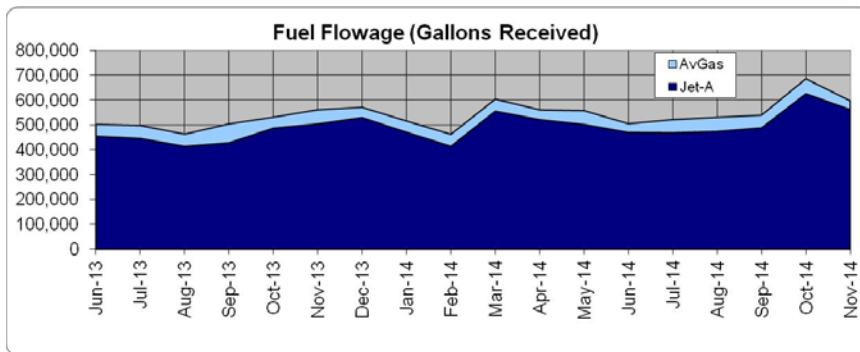


Managing the Mix: Addison's air traffic includes a wide variety of aircraft types with an equally wide range of performance capabilities, all of it operating from a single runway. Addison Tower's FAA air traffic controllers do a masterful job keeping the traffic safely separated yet moving smoothly ... it's no simple thing to efficiently sequence the mix of jets, turbo-props, and piston-engine aircraft that use Addison on a daily basis. Pictured above is a Cessna Citation 550 following a Beech Super King Air B350 in the departure queue with an experimental category Vans RV on short final.



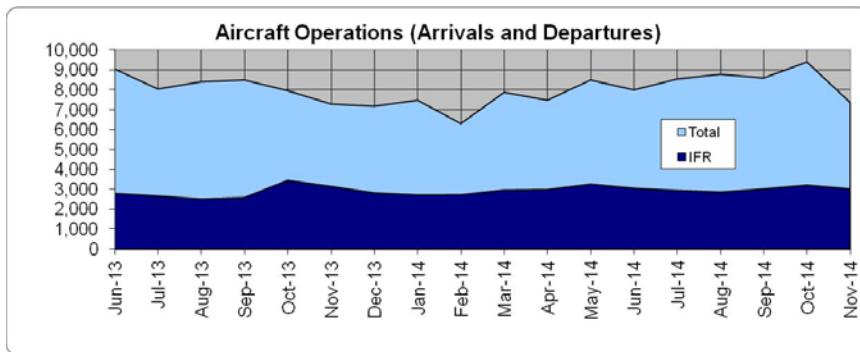
REVENUE

November 2014 revenue totaled a very respectable \$430,148. That was down just 3% from October's outstanding result, with most of the difference in fuel flowage revenue. The real estate portfolio has been producing a very consistent \$350,000/month over the past few months; if fuel flowage revenues exceed last year's results, FY15 revenues could top \$5 Million.



FUEL

November 2014 fuel flowage was down 13% from October, no surprise considering that October was the best month in over seven years. However, November was still a very good month with 596,957 gallons received, up 6% over the November 2013 result. FY15 is off to a strong start.



OPERATIONS

November total operations dropped off substantially from October, which is not too surprising since October's weather was much more conducive for flying. At 7,361 total operations, the drop-off was perhaps a little steeper than expected, but IFR itinerant operations (3,017) remained above the 3,000 level for the month. The larger concern is a continuing low level of international operations. Airport staff has begun looking into this to see what might be behind it and whether it is something that the airport can affect. It is interesting to note that while total operations have remained steady near 95,000/year for the past 5 years, fuel flowage volumes continue to increase.



UNIQUELY ADDISON

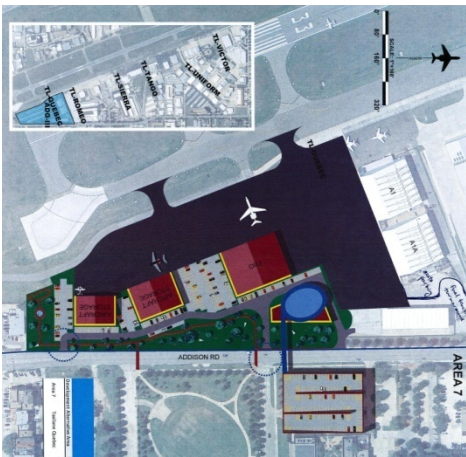


Above: the airport's "Southeast Quadrant" as of October 2013 (before EMAS installation).

SOUTHEAST QUADRANT REDEVELOPMENT

On November 1, Addison [released an RFQ](#) seeking parties interested in redeveloping the southeast quadrant of the airport. The 16-acre site is the prime location on the airport, with superb access and visibility from both airside and landside; it's an opportunity to do something truly special. This redevelopment will be guided by the 2013 Airport Strategic Plan and the in-progress Airport Master Plan update.

Below: a conceptual redevelopment illustration for the southeast quadrant from Airport Master Plan work.



Above: Addison Fire Department's Rescue 101 gives a water cannon salute to the aircraft carrying SSgt. Travis Mills as it enters the Million Air ramp.

VIP VISITOR

Late on the evening of November 6, a large group of Addison firefighters and police officers turned out to honor and welcome a true VIP to Addison: U.S. Army SSgt. (Ret.) [Travis Mills](#).



Above: a welcoming honor guard of APD and AFD personnel waits for SSgt. Mills to disembark.

Below: SSgt. Travis Mills (left).



SSgt. Mills was here for the premiere (on Veteran's Day) of a movie about his life, "[Travis: A Soldier's Story](#)." SSgt. Mills "is a wounded warrior, motivational speaker, actor, and an advocate for veterans and amputees. Despite losing portions of both arms and legs from an IED while on active duty in Afghanistan, Travis continues to overcome life's challenges, breaking physical barriers and defying odds." SSgt. Mills is a remarkable and truly inspiring individual and it was our great privilege to welcome him to Addison.

NEW AIRPORT STAFF MEMBER

Kelly Michie started November 19 as the airport's new Real Estate Asset Manager. He will handle much of the day-to-day management of the real estate portfolio, which generates more than 80% of the airport's revenue. Kelly brings nearly twenty years of comprehensive commercial real estate and portfolio management expertise, having worked for Trammell Crow, Deloitte Consulting, Bank of America and most recently Fannie Mae. We are very happy to have him join our team.



Above: Kelly wasted no time getting to work.

FIRST PRODUCTION MODEL HONDAJET VISITS ADDISON



The first production model HondaJet HA-420, serial number 11, visited Cutter Aviation at Addison Airport on Friday, November 7. This light business jet is distinguished by its unique (patented) “over-the-wing engine mount” design. The aircraft features an all-composite fuselage and a natural laminar flow wing; it seats five passengers, has a maximum cruise speed of 420 knots and a service ceiling of 43,000 feet. The HondaJet has an NBAA standard IFR range of 1,180 nautical miles ... which is Addison to Teterboro, non-stop. A photo of the HondaJet that was posted on the [Addison Airport Facebook page](#) was viewed over 14,000 times.

Above: The HondaJet on the ramp at Cutter Aviation. [This aircraft first flew on June 27.](#)
Right: three additional views of the HondaJet and its distinctive engine mounts.



AIRPORT MAINTENANCE: GATE REPAIR JOB

Damage was reported to a swing-type vehicle gate on the east side of the A1a hangar; since this is an airport-owned facility, maintenance staff was dispatched to repair the gate. The damage appeared to have been caused by a vehicle hitting one of the gate support posts. **Below, Left:** Charlie Goodin uses a backhoe to remove the damaged gate post. **Below, Right:** Tom Walsh unchains the damaged post from the backhoe. The backhoe door was open to facilitate communication between the workers. (Photos by Darryl Shand.)



“NEXTGEN” AIR TRAFFIC CONTROL COMES TO NORTH TEXAS



On September 18, 2014 the FAA Air Traffic Organization “turned on” 80 new arrival and departure procedures in the Dallas-Fort Worth Metroplex; the culmination of the North Texas “Optimization of Airspace and Procedures in the Metroplex” (NTX-OAPM) project. **Above, Left:** DFW and DAL arrivals and departures, South Flow. **Above, Right:** DFW and DAL arrivals and departures, North Flow. **Below:** arrival and departure routes for the “satellite” (GA Reliever) airports, North and South Flows. Red lines denote GPS (RNAV) arrival procedures; purple lines denote “conventional” arrival procedures; blue lines denote GPS (RNAV) departure procedures; and green lines denote “conventional” departure procedures. Yes, it’s complex: DFW Terminal Radar Approach Control (TRACON) – “D10” – handles over 1,000,000 annual instrument flight operations, an average of more than 2,700 per day, and provides services (on average) to more than 400 additional VFR flights per day.

